

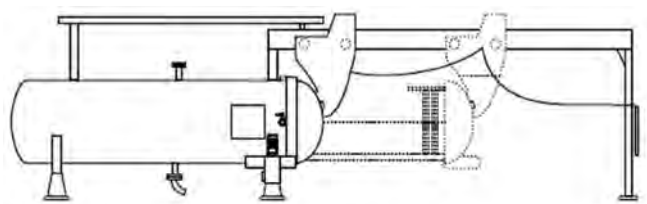
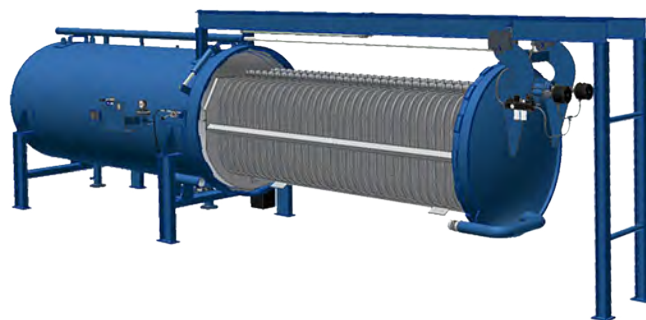
# RETRACTABLE BUNDLE

## HORIZONTAL PRESSURE LEAF FILTER SYSTEMS

This filter system has been designed with a retractable bundle. The bundle with the installed pressure filter leaf elements can be moved in and out of the filter body without the system being displaced.

### FEATURES AND BENEFITS

- The retractable bundle makes it easy and safe to access the pressure filter leaf element for maintenance and cleaning.
- The pressure filter leaves are positioned vertically making cake discharge easy.
- The pressure filter leaf element is built with reinforced binding around its full circumference to protect the rim should manual removal be required, ensuring the filter leaf durability.



### Retractable bundle.

The shell doesn't move; the bundle with filter elements move in and out of the shell.